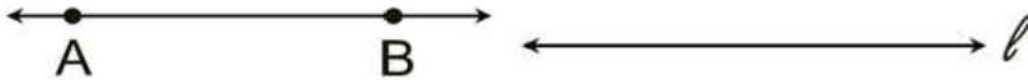


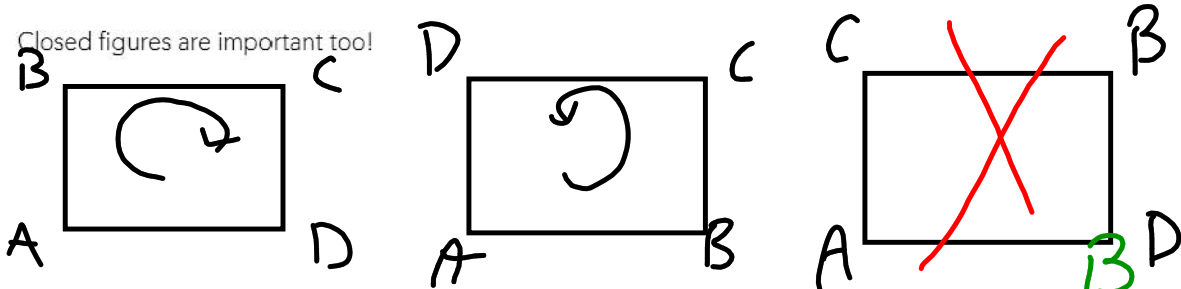
\longleftrightarrow
AB

line l

How about lines?

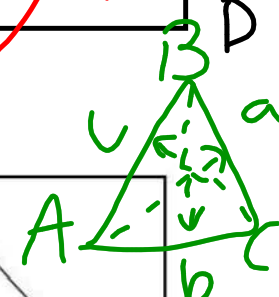


Closed figures are important too!

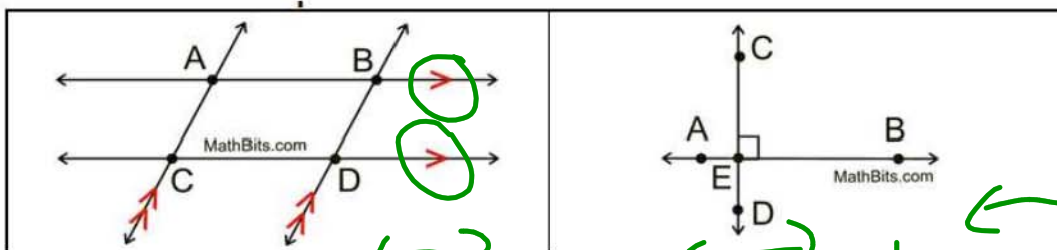


Triangles:

<p>$\triangle ABC$ or $\triangle BCA$ or any other three letter combination of A, B and C will apply to this triangle.</p>	<p>When using letters to refer to the sides of a triangle, it is customary to label the sides as small case letters. Across from the vertex labeled capital A will be the side labeled small case a, and so on.</p>	<p>A right triangle is designated with a "box" drawn in the location of the right angle.</p>
--	---	--



Parallels and Perpendiculars:

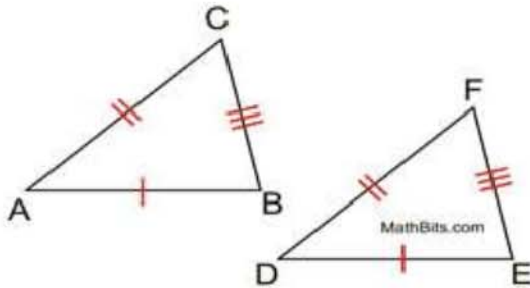


\longleftrightarrow
AB \parallel CD
 \longleftrightarrow
AC \parallel BD

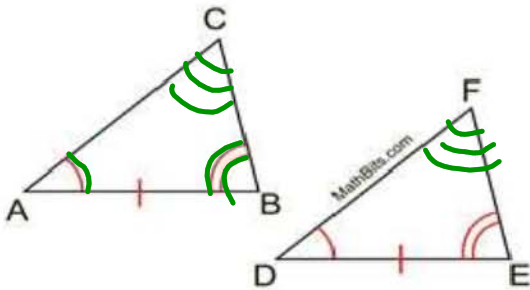
\longleftrightarrow
BA \perp DC



Congruent Sides and Angles:



$$\begin{aligned} \overline{BC} &\cong \overline{EF} \\ \overline{AB} &\cong \overline{DE} \\ \triangle ABC &\cong \triangle DEF \end{aligned}$$



$$\angle CAB \cong \angle FDE$$

$$\angle ABC \cong \angle DEF$$